



## AirCard™ 590 Series

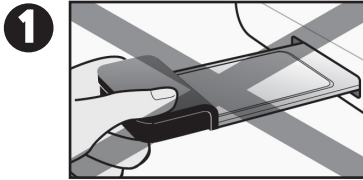
Wireless Modem  
Quick Start Guide



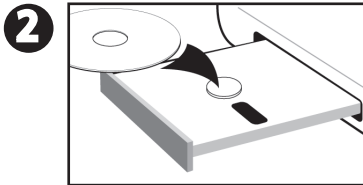
Your package contains the following:

- AirCard wireless modem
- Installation CD containing the Watcher™ connection manager software, User Guide, and warranty information
- This Quick Start Guide

This guide provides installation instructions for users of Windows® XP and 2000. For other operating systems, see the User Guide on the AirCard CD.



**1** Please do not insert the AirCard modem into the card slot before installing the software.

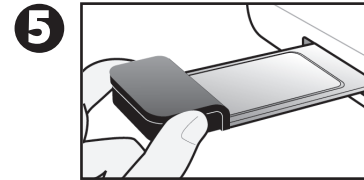


**2** Insert the CD in the CD-ROM drive. If a menu does not appear automatically, select **Start > Run** and enter **d:\Launch.exe**, where d is your CD-ROM drive letter.


**3** Select **Install Watcher software**. This launches a program that guides you through installation of Watcher and the AirCard modem drivers.

**4** Write down the ESN or MEID (shown on the back label of the AirCard modem):

ESN/MEID: \_\_\_\_\_



**5** When prompted, insert the AirCard modem into the card slot.

**6** Watcher should automatically start. If it doesn't, double-click the Watcher icon  on your desktop.

**7** If your AirCard modem is not activated, the Activation Wizard may start automatically. If it doesn't, in Watcher select **Tools > Activation Wizard**. Follow the instructions on the screen. You may need a telephone to contact your service provider, as part of the activation process.

**8** To connect to the network, in Watcher click **Connect**. (If the Connect button is not available, ensure that the AirCard modem is properly inserted, not locked, and not powered off. For more information, see the online Help.)

**?** For more information, see the:

- User Guide (on the supplied CD)
- Online Help (in Watcher, select **Help > Help topics**)

## Care and maintenance

As with any electronic device, the AirCard wireless modem must be handled with care to ensure reliable operation.

Follow these guidelines in using and storing the card:

- The card should fit easily into the card slot. Forcing the card into the slot may damage connector pins.
- Protect the card from liquids, dust, and excessive heat.
- When the card is not connected to your computer, store the card in the carry case provided.